

# Content

#westweek2017 #icons #innovators



Join Pacific Design Center for WESTWEEK 2017 as Spring Market celebrates today's seminal standard bearers and groundbreaking influencers leading the design industry ever-forward, with presentations featuring top talent who both embody and deliberate on what it means to be iconic and innovative in the design world now.

Registration required for all events [westweek2017.eventbrite.com](https://www.westweek2017.eventbrite.com)



**CLINTON SMITH**  
VERANDA



**JOHN SALADINO**  
Saladino Group



**RICHARD SHAPIRO**  
Studiolo



**KRISSA ROSSBUND**  
Traditional Home



**MARTYN LAWRENCE BULLARD**  
Martyn Lawrence Bullard Design



**TIMOTHY CORRIGAN**  
Timothy Corrigan Inc.



**SUZANNE RHEINSTEIN**  
Suzanne Rheinstein



**PAMELA JACCARINO**  
Luxe Interiors + Design



**HOLLY HUNT**  
Holly Hunt



**MAYER RUS**  
Architectural Digest



**MICHELLE NUSSBAUMER**  
Ceylon et Cie



**HUTTON WILKINSON**  
Hutton Wilkinson

ARCHITECTURAL DIGEST

**luxe.**  
interiors + design

TRADITIONAL  
HOME

VERANDA

Angeleno

ca  
CALIFORNIA

CALIFORNIA  
HOMES

ELLE DECOR

Los Angeles Times  
DESIGN LA

interiors

LALA

RIZZOLI  
NEW YORK

VIYET  
THE OUTSIDE INSIDE





 ARMANI / CASA

Los Angeles, Pacific Design Center, 8687 Melrose Avenue, Suite G170, 310.358.0901  
New York, Decoration & Design Building, 979 Third Avenue, Suite 1424, 212.334.1271  
Miami, 10 NE 39th Street, Miami Design District, 305.573.4331



# WESTWEEK 2017

ICONS+INNOVATORS • WEDNESDAY, MARCH 22

## MORNING KEYNOTE

10:00 AM – 11:00 AM | Blue Conference Center, Suite B259

PRESENTED BY

VERANDA

## THE INTERSECTION OF ICON AND INNOVATOR

**Moderator:** Clinton Smith, Editor in Chief, VERANDA

**Panelists:** John Saladino and Richard Shapiro

Join Clinton Smith, Editor in Chief of VERANDA, for an enlightening discussion with designers John Saladino and Richard Shapiro. Renowned as prolific, accomplished modern-day Renaissance men, their shared paths, passions and achievements epitomize the intersection of being both icons and innovators. By combining artistic sensibility with an entrepreneurial spirit, each has become known for his own inimitable style, which is expressed through profound bodies of work that influence the discourse of design today.

A reception with the panel celebrating VERANDA's 30th Anniversary, featuring Lori Weitzner and a book signing of her new tome *Ode to Color*, follows at **Samuel & Sons, Suite B609**.

RSVP required at [westweek2017.eventbrite.com](http://westweek2017.eventbrite.com)



Clinton Smith



John Saladino



Richard Shapiro



Krissa Rossbund



Martyn Lawrence Bullard



Suzanne Rheinstein



Carl Dellatore



Timothy Corrigan

## AFTERNOON KEYNOTE

3:00 PM – 4:00 PM | Blue Conference Center, Suite B259

PRESENTED BY

TRADITIONAL HOME

## CONVERSATION PIECES OF THE DESIGN MASTER CLASS

**Moderator:** Krissa Rossbund, Senior Style Editor, *Traditional Home*

**Panelists:** Martyn Lawrence Bullard, Timothy Corrigan, Carl Dellatore, Suzanne Rheinstein

The art of decoration doesn't come easy. Reinvention, quality, symmetry, nuance, provenance ... these considerations, each as significant as the other, yield memorable surroundings. Join *Traditional Home* Senior Style Editor Krissa Rossbund for a discussion with three decorative arts icons ... Suzanne Rheinstein, Timothy Corrigan and Martyn Lawrence Bullard ... who have penned their thoughts in the new Rizzoli book, *Interior Design Master Class: 100 Lessons from America's Finest Designers*. The conversation will commence with an interview of the title's editor, Carl Dellatore, who assembled this masterful compendium from decoration's leading visionaries.

Reception and book signing with Carl Dellatore and the panel to follow at **Reagan Hayes, Suite B300**.

RSVP required at [westweek2017.eventbrite.com](http://westweek2017.eventbrite.com)

# SUMMIT



L.A. MOD LOUNGE CHAIR BY ALWY VISSCHEDYK

MONTEREY LOS ANGELES SAN FRANCISCO LONDON MONACO | [SUMMITFURNITURE.COM](http://SUMMITFURNITURE.COM)



# WESTWEEK 2017

ICONS+INNOVATORS • THURSDAY, MARCH 23

## MORNING KEYNOTE

10:00 AM – 11:00 AM | Blue Conference Center, Suite B259

PRESENTED BY

**luxe.**  
interiors + design™

## THE WOMAN BEHIND THE NAME

**An Intimate Conversation with Holly Hunt and Pamela Jaccarino, Editor in Chief, *Luxe Interiors + Design***

Holly Hunt is renowned for her creative and entrepreneurial leadership in the interior design industry through her nationwide showrooms and product excellence. As an arbiter of refined taste, her eye for what is now and next is the hallmark of her international success as a multi-award winning designer, entrepreneur and CEO.

*Luxe Interiors + Design* Editor in Chief Pamela Jaccarino sits down with Holly for a fascinating look at the history, influence and future trajectory of this dynamic steward of the HOLLY HUNT brand.

Reception to follow at **Holly Hunt, Suite B377.**

RSVP required at [westweek2017.eventbrite.com](http://westweek2017.eventbrite.com)



Pamela Jaccarino



Holly Hunt

## AFTERNOON KEYNOTE

3:00 PM – 4:00 PM | Blue Conference Center, Suite B259

PRESENTED BY

**ARCHITECTURAL DIGEST**

## FROM WANDERLUST TO WONDERLUST:

**The Exuberant, Global Style Of Michelle Nussbaumer and Hutton Wilkinson**

**Moderator: Mayer Rus, West Coast Editor, *Architectural Digest***  
**Panelist: Michelle Nussbaumer, Hutton Wilkinson**

Iconoclasts and artistic soulmates, Michelle Nussbaumer and Hutton Wilkinson share a singular affinity for maximalist interiors inspired by exotic travels, multi-cultural references, historical treasures and *joie de vivre*, all of which guide their creative process. Join *Architectural Digest* West Coast Editor Mayer Rus for a dialogue with the irrepressible tastemakers as they discuss how their more-is-more philosophy and globe-trotting adventures inform their worldly aesthetic.

Reception to follow at **Armani/Casa, Suite G170.**

RSVP required at [westweek2017.eventbrite.com](http://westweek2017.eventbrite.com)



Mayer Rus



Michelle Nussbaumer



Hutton Wilkinson



# WESTWEEK 2017

ICONS+INNOVATORS • WEDNESDAY, MARCH 22

## Showroom Programs

RSVP required for all events:  
[westweek2017.eventbrite.com](http://westweek2017.eventbrite.com)

11:00 AM - 12:00 PM

### Samuel & Sons, Suite B609 Keynote Reception and Book Signing.

Join VERANDA, Clinton Smith, John Saladino and Richard Shapiro to celebrate the magazine's 30th Anniversary with a reception in the Samuel & Sons showroom following the morning keynote. During the reception designer Lori Weitzner will be signing her new book *Ode To Color*.



### Donghia, Suite G196

Join David Toback, Donghia's Director of Textile Design, for an energetic presentation of the brand's evocative new Manhattan Muse Collection. The nearly 200 offerings convey the energy, art, drama, music and unique lifestyles of this iconic locale; birthplace of the Donghia brand. Andrea Rubelli, CEO of Donghia, and Carolyn Reed, VP & CBO, Rubelli and Sahco, will present the latest Rubelli Venezia and Sahco textile collections as well. A great time with light refreshments served.



Andrea Rubelli David Toback Carolyn Reed

### Robert Allen, Suite B499 Technology and Innovations: How the Internet Has Disrupted the Way We Shop and Design.

In the last decade, technological advancements have made a powerful impact on the design world. Learn from pioneers how the latest Internet innovations will affect the design community and how to leverage these advantages to your benefit. Moderated by LALA Magazine Executive Editor Amanda Eberstein. Panelists include Elizabeth Brown, CEO of Viyet, Mark Cutler, Interior Design and Chief Designer of DesignerInc and Ohara Davies-Gaetano, Interior Designer of ODG Interiors.



Amanda Eberstein Elizabeth Brown Mark Cutler Ohara Davies-Gaetano

11:30 AM - 12:30 PM

### Baker Furniture, Suite B525 The New Frontier: Designing World-Class High-Rise Luxury Residences.

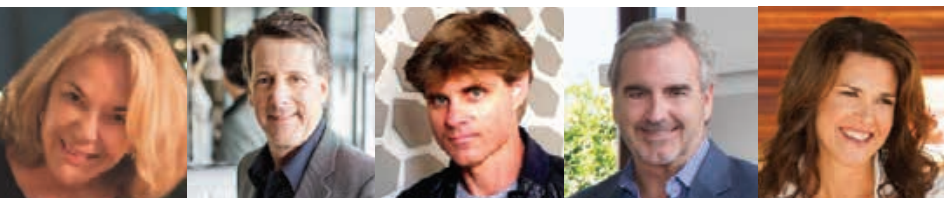
The demand for luxury residences in modern condominium towers is skyrocketing. A unique hybrid of high-end residential and hospitality design, these projects require close collaboration between architect, designer and developer to create a property that captures the spirit of the times while providing enduring value for a discerning international clientele. Join Michael Wollaeger, Editor-in-Chief of the *Los Angeles Times*' new *DesignLA* Magazine, as he discusses the challenges and opportunities of designing successful luxury condominium projects with the award-winning team behind Emaar Development's peerless Beverly West Residences: architect Everett Benke, Robert Hidey Architects; interior designer Lisa Garriss, Plum Design West. Light lunch served.



Michael Wollaeger Everett Benke Lisa Garriss

### Witford, Suite B517 Design in America: Cutting Edge Products with Innovation and Style.

Quality, craftsmanship and tradition are just a few of the words that come to mind when we hear "American made." While fewer goods are manufactured in the US, it doesn't mean American made products are not alive and well. In fact, some of the most innovative and sophisticated products on the market today are American born and bred. Designers are not only embracing the excellence of American made goods, they are pioneering their own cutting-edge products for the national design marketplace. *California Homes* Editor-in-Chief Susan McFadden moderates an A-list panel of industry experts including designer Kendall Wilkinson, Snyder Diamond's Russ Diamond, Cabana Home's Steve Thompson and designer/architect Mario Romano who will discuss their new product lines manufactured in the United States, and will survey the international design marketplace and its profound influence on our own product lines.



Susan McFadden Russ Diamond Mario Romano Steve Thompson Kendall Wilkinson

12:00 - 1:00 PM

### Scott Group Studio, Suite B613 The Art of Tibetan Hand-Knotted Rugs.

Join Jennifer Kirchgessner, Creative Director for Scott Group Studio, as she shares her own journey through Nepal while exploring this regionally, unique craft of hand-knotted rug making. You'll learn the different techniques, terminology and intimate understanding of how these masterpieces are made. This centuries-old art form is as intriguing as it is beautiful. Lunch served. CEU offered (pending).



Jennifer Kirchgessner

12:00 PM - 1:30 PM

### Cooper Pacific Kitchens, Suite G273

Join *California Home + Design*'s Editorial Director Lindsey Shook for an innovator's discussion with our Award Winner for Best Kitchen Design in 2017 ... Ryan Brown of Brown Design Group, along with host Steven Cooper of Cooper Pacific Kitchens, Ryan White of Ryan White Designs, Patty Dominguez of Cosentino and special guest Executive Chef David Codney of The Peninsula Beverly Hills. With a plethora of new products, material applications and technological advancements trending in kitchen design, we consult with leading experts on the latest innovations for today ... and icons for tomorrow ... including a professional chef's perspective on the relative impact to his creative process and the resulting culinary experience. Attendees will be encouraged to participate in an open-format discussion and engage with our esteemed panelists. A light lunch to follow. Mandatory RSVP to [RSVP@inkprgroup.com](mailto:RSVP@inkprgroup.com)



Lindsey Shook David Codney Steven Cooper Patty Dominguez Ryan White

12:30 PM - 1:30 PM

### CinemaTech Home Theater, Suite M26

CinemaTech, the industry leader in theater seating, acoustical treatment, theater design and custom sofas invites you to a presentation by Director of Theater Design Stacey Chu who will discuss current home theater trends and partner opportunities with CinemaTech. The showroom debuts 11 seating offerings, a design center, Planar's 108" LED videowall, 98" Ultra 4K display and Colorbeam's tunable LED architectural and general lighting solution featuring RGB lighting, 1,700 to 6,500 Kelvin whites and flicker free dimming.



Stacey Chu

1:00 PM - 2:00 PM

### Thomas Lavin, Suite B310 Master Class Designer Roger Thomas on Innovation in the Modern Age: Mixing Craft with Contemporary.

Roger Thomas is one of the most inventive and evocative American interior designers in the world, best known for his work on Las Vegas' most architecturally memorable hotels, including the Bellagio, Wynn and the new Wynn Palace Cotai. Thomas, named five times to the *Architectural Digest* AD100 and to the *Interior Design* Hall of Fame in 2015, channels his deep knowledge of the history of craft into the creation of contemporary hand-made wallcoverings with the artisans at Maya Romanoff. What is the source of Thomas' creativity? And how does he know what designers want? Join us as Michael Wollaeger, Editor-in-Chief of the new *Los Angeles Times*' Magazine *DesignLA*, engages in a Q&A with this master class designer.



Michael Wollaeger Roger Thomas

### Fabricut, Suite B470 Stroheim + Crypton Home = Luxury Performance Fabrics You Need.

Stroheim partners this season with Crypton Home for a luxury performance upholstery collection featuring designer Dana Gibson's playful designs. Join Gibson and Crypton Home's Kelly Ponder for a fabric show-and-tell, as they share why and how Crypton Home is the ultimate performance fabric for luxurious interiors while revealing the design inspiration behind Gibson's fabric collection for Stroheim. Refreshments served.



Dana Gibson Kelly Ponder



# WESTWEEK 2017

ICONS+INNOVATORS • WEDNESDAY, MARCH 22

## Showroom Programs *continued*

RSVP required for all events:  
[westweek2017.eventbrite.com](http://westweek2017.eventbrite.com)

### 1:00 PM - 3:00 PM

#### Kneedler|Fauchère, Suite B600 Welcome Zak + Fox Reception.

“What’s the story behind it?” If you spend time with Zak Profera, you’ll know the answer to that question and appreciate the layered narrative at the heart of each of his fabric collections. Be it a tiger print from a Tibetan prayer rug or his own collection of kimono stencils, Zak Profera is a new generation maker. Founded in 2012, his New York firm Zak + Fox is already on solid footing with top designers in love with his penchant for folkloric elements. Always charged with an ancient soul, he’s mastered an aesthetic that is classic, contemporary and ever-shifting. Join us to welcome Zak and be first to see his latest collection, Timbuktu, which includes ten new patterns inspired by his most recent desert travels. Espresso bar and sweets.



Zak Profera

### 1:30 PM - 2:15 PM

#### HOLLY HUNT/Phillip Jeffries, Suite B619

##### Inspiring a More Beautiful World ... One Wall at a Time.

Can a wallcovering company change the world? Yes, one wall at a time. Join Jeffrey Bershad, CEO of Phillip Jeffries, as he shares secrets from the company’s journey in discovering their legacy. Design making a difference, Jeffrey reveals how they came to create a plan for positive impact on our culture and community. Come ready to be inspired and create your own legacy.



Jeffrey Bershad

### 2:00 PM - 3:00 PM

#### Bausman & Company, Suite B396

##### Bench-Made Furniture in the 21st Century.

Bausman & Company, a local eco-friendly manufacturer of fine bench-made furniture, incorporates cutting-edge technology with old-world artisanal practices. Join Showroom Manager Deric Schmidt, Jocelyn Birdt and Regional Director Keri Szukenko as they take you through the process of building artisanal custom furniture. Lite bites and libations follow.

#### Cowtan & Tout, Suite B647

##### Redefining Luxury: At Home and Abroad.

Cowtan & Tout hosts *Elle Décor’s* Karen Marx as she delves into the idea of refreshing our understanding of luxury in design today with California-based designer Amy Meier and New York-based designer DB Kim. Whether it is a take on residential design or global hospitality design, these three discuss the nuance of ultimate refined living through their leading edge work and their unerring designer’s lens.



Karen Marx

DB Kim

Amy Meier

ELLE DECOR

### 2:00 PM - 3:30 PM

#### A. Rudin, Suite G172

##### Bohemian Rhapsody: 1970s California Design.

Nestled between the rigidity of midcentury modernism and the reactionary backlash of postmodernism, design in 1970s California embraced a sense of freedom and influence that still leads the charge in the design milieu. Moderated by *Interiors* Editor-in-Chief Erika Heet, a panel of design innovators including Jamie Bush, Sue Firestone and Spencer Rudin will engage in a lively discussion on California design in the 1970s, and the ways in which it continues to endure today. Includes a visual presentation starring rare snapshots of original vintage and contemporary designs. Reception to follow.

interiors



Erika Heet

Jamie Bush

Sue Firestone

Spencer Rudin

### 4:00 PM - 5:00 PM

#### Reagan Hayes, Suite B300

##### Keynote Reception & Book Signing.

Join *Traditional Home* and the panel for a reception following the afternoon keynote, featuring author Carl Dellatore and a book signing of his new tome *Interior Design Master Class*.



### 4:00 PM - 5:00 PM

#### Edelman Leather, Suite G158

**Artisans in Design.** In the design process, artists from many disciplines push the boundaries of what is possible in order to deliver what clients want and need ... artistic and creative expression. *Interiors* Editor-in-Chief Erika Heet and Creative Director Patrick O'Bryan moderate Kyle Bunting, Los Angeles designer Janna Levenstein and Philadelphia lighting and furniture designer John Pomp in a conversation exploring the meaningful creative relationship between designers, architects and artisans and the importance of art’s ability to elevate design. Reception to follow.

interiors



Erika Heet

Patrick O'Bryan

Kyle Bunting

Janna Levenstein

John Pomp

#### Quintus, Suite B532

##### Licensing: Is It For You? Guidelines, Guardrails and Advice.

Join Jobst Blachy, owner of Quintus, as he leads a fascinating discussion on the benefits and pitfalls of licensing with an illustrious panel, including Ken Fulk of Ken Fulk Design, Joan Behnke of Joan Behnke & Associates, Arthur Libera of Design Commerce Agency and Alex Woogmaster of Woogmaster Studio and Senior Designer at Wynn Design & Development. Discover from these experts what you need to look out for in a licensing agreement. How do you protect yourself? Is licensing even the right path for you? Reception and book signing with Ken Fulk and the panel to follow in the Quintus showroom, Suite B519.



Jobst Blachy

Joan Behnke

Ken Fulk

Arthur Libera

Alex Woogmaster

#### Scott Group Studio, Suite B613

##### Cocktails + Conversation with Larry Hokanson.

Larry Hokanson, founder of Hokanson rug company, is a true and fearless industry pioneer in rug design. His lifetime exploration and understanding the importance of art and global culture combined with his intense passion for Russian history are captured in Scott Group Studio’s latest collection Istorii: A Larry Hokanson Collection. Join Larry as he shares his “Istorii”, meaning “stories” in Russian, articulated through eight expressive patterns and vibrant hues.



Larry Hokanson



### 5:00 PM - 6:00 PM

#### Quintus, Suite B519

##### Ken Fulk Book Signing.

Join Jobst Blachy and Quintus as we celebrate Mr. Ken Fulk’s *Magical World* with a book signing and Italian cheeses and charcuterie. Step inside Ken Fulk’s magical world of design for interiors, parties and more. The book showcases the best of Ken’s luxurious environments over the past decade: gorgeous dwellings he has designed for notable clientele; his own three homes; and stunning examples of his party and event designs.

### 5:00 PM - 8:00 PM

#### Jean de Merry, Suite B653

Jean de Merry invites you to an opening cocktail party to celebrate their new Pacific Design Center showroom and the launch of new collections: Douglas Fanning, Bassam Fellows, Marmol Radziner and Tom Faulkner, with a special 5 year anniversary presentation of the Diva Stool by Azadeh Shladovsky.



Jean de Merry



# WESTWEEK 2017

ICONS+INNOVATORS • WEDNESDAY, MARCH 22

## Open House Events

9:00 AM - 5:00 PM

### Assouline Books & Gifts, Suite G154

Assouline invites you to visit our stunning new showroom. Admire our one-of-kind floor designed and hand-painted by the local artist Retna. While visiting, drop off your business card to win a \$50.00 candle in our drawing held each day during WESTWEEK. Assouline publishes the most beautiful and finest quality books for your coffee table or library. Every purchase comes with a copy of our catalog, and one of our fabulous tote bags is included with purchases of \$200.00 or more.



Assouline

### Crestron, Suite G288

Want to design smarter? Visit Crestron and discover the excitement of interior technology. Quickly learn how you can transform your client's environment for better living and further shape the experience of spaces you design. Get an update on the latest in home automation of shades, lights, music, video and more. Immerse yourself in this invisible luxury. Receive a shade fabric tote bag and enter to win an Amazon Echo.



Crestron

### Duralee/HC Monogram, Suite B601

Visit the Duralee showroom to see our latest offerings. From updated traditional to fun outdoor collections, we have something for every project. We carry a full range of furniture and drapery hardware, including motorization. Light refreshments served.

### Ebanista, Suite G190

Ebanista's artisan-made collection is a culmination of all the things founders Fari and Melinda Pakzad have loved since they started as designers over thirty years ago. They've always been drawn to the classics, elegantly edited with a modern allure and an eye for unique details, personality and intriguing finishes. Come see their stunning collection, expertly hand-crafted in the USA.

### Osborne & Little, Suite B643

Please join Osborne & Little for an Open House. With Spring's launch of 23 new fabric and wallpaper collections from Osborne & Little, Designers Guild and Christian Lacroix, there are endless new options! Enjoy Prosecco and sweets as you shop.

### Pindler, Suite B530

Please join Pindler for an Open House to experience our end-less new fabric options for your Spring projects. Come check-out all that Pindler has to offer. Refreshments will be served.



Pindler

9:00 AM - 6:00 PM

### CinemaTech Home Theater, Suite M26

CinemaTech along with showroom partners Planar and Colorbeam North America, would like to invite you to see their brand new showroom featuring theater seating, custom sofas, a design center, 108" LED videowall, 98" Ultra 4K display and tunable LED architectural and general lighting solutions. Please stop by to meet the team, put your feet up in one of our comfy sofas and enjoy a refreshment on us.

### Lapchi Rug Design Studio, Suite G176

Designed in Italy: Battilossi Rugs for Lapchi. Building on his family's textile knowledge and the recognition of a passion for fine modern rugs hand-woven in Asia, the Battilossi Collection for Lapchi will be featured during WESTWEEK. Maurizio Battilossi has both designed and commissioned rugs for the European market since 1994. His current collaborations include rugs in the Berber weaving tradition, the Draga Obradovic textiles and colorful Eclectica rugs.

### Maharam, Suite G152

Join Maharam for a special preview of its latest product initiative: leather, with eight styles sourced exclusively in Italy. Guided by Maharam's material expertise, the collection is minimally treated and celebrates the beauty of leather returned to a more natural state. Color palettes of great depth and specificity complement this approach. Developed exclusively by the Maharam Design Studio, whose color direction prioritizes an independent response to the material qualities of the product at hand, Maharam leather is available in one hundred unique shades.

10:00 AM - 4:00 PM

### International Down & Linen, Suite B368

Leave it to SFERRA to make comfort as beautiful as possible. Stop in to sample the exquisite detailing of the new Spring collection and take time to touch the newest in soft.

### Quadrille Fabrics & Wallpapers, Suite B629

Please join us in our stunning, brand-new showroom as we feature our latest hand-printed fabrics and wallpapers. Light refreshments will be served.

11:00 AM - 3:00 PM

### HOLLY HUNT, Suite B377

HOLLY HUNT Los Angeles celebrates the arrival of the new Moray Outdoor Furniture Collection from HOLLY HUNT. Stop by our 3rd Floor showroom and experience the new collection with outdoor-inspired beverages and light bites.

11:00 AM - 4:00 PM

### Francesco Molon Italian Luxury Furniture, Suite B540

Francesco Molon invites you to visit the showroom during WESTWEEK Spring Market to see our Italian, tailor-made furniture. We offer both the timeless classics and contemporary deco collections in our showroom. Refreshments like nespresso and chilled Prosecco with Italian treats will be offered. Saluti!

11:00 AM - 5:00 PM

### Vondom, Suite B114

Join the Vondom team for a glass of cava at the WESTWEEK Open House of their new showroom and discover the latest designs from the Spanish brand. Inspiration awaits you!



Vondom

12:00 PM - 2:00 PM

### Hagan Flynn, Suite B435

Experience THG-Paris' collection of bath and kitchen fittings at the Hagan Flynn showroom during WESTWEEK. Join us for champagne, hors d'oeuvres and a peek at THG-Paris' offerings for the luxury commercial and residential markets.



Hagan Flynn

12:00 PM - 3:00 PM

### HOLLY HUNT/Phillip Jeffries, Suite B619

Dune grass whips in the wind as scattered shells line the New England coast. The sun sets on a private Malibu oasis. Yachts cruise down the cool blue waters of St. Barts. Luxurious cabanas line the French Riviera awaiting your arrival. Taking inspiration from your beach oasis, a place where you go to escape ... elements of coastal textures, airy fabrics and chic naturals inspire. From Cape Cod to Cannes ... Spring 2017 is COASTLINES.

### Reagan Hayes, Suite B300

Please join Reagan Hayes for an Open House to commemorate the recent launch of the company's hand-printed fabric offering! In addition to the signature furniture pieces from Reagan Hayes, the showroom features new acrylic pieces from the Allan Knight Modern Classics Collection and a wide assortment of original art work.



Reagan Hayes

1:00 PM - 4:00 PM

### JANUS et Cie, Suites B146/B193

JANUS et Cie invites you to the very first West Coast look at the company's Spring 2017 collections. Enjoy an artisan beverage while relaxing among bespoke designs including new JANUSfiber groups and an expansive interior rattan offering of more than 500 pieces.



JANUS et Cie

1:00 PM - 5:00 PM



Kendra Frisbie

### Baker Furniture, Suite B525

Meet Kendra Frisbie, the President of McGuire Furniture, and explore the collection. We have new furniture introductions by Barbara Barry and Steven Volpe, including the Thatcher Sectional, Sierra Table and Canyon Swivel Chairs. Kendra will share stories on the inspiration and design process of these innovative collections as well as talk about the new direction of the McGuire brand.

3:00 PM - 5:00 PM

### Holland & Sherry, Suite B305

Visit Holland & Sherry to preview the West Coast launch of our newest collection. Modern Legacy is our tribute to the classics, reimagined for fabric, rugs, wallcovering and embroidery.



Holland & Sherry

4:00 PM - 6:00 PM

### Michael Taylor Collections, Suite B504

Get Taylor'd at Michael Taylor Collections. Enjoy a signature cocktail (or two) while attending the exclusive preview of the new TAYLOR line of contemporary furnishings. Channeling their iconic namesake, eighteen new unexpected designs come together with a fresh modern edge in TAYLOR. Also premiering, a brand new collection by California interior designer Naomi Kobrin for Michael Taylor Designs. Wine and assorted cheeses will also be served.



# WESTWEEK 2017

ICONS+INNOVATORS • WEDNESDAY, MARCH 22



BY INVITATION ONLY

## STARS OF DESIGN and STARS ON THE RISE AWARDS

Established by Pacific Design Center more than 20 years ago, the Stars of Design Awards honors Southern California's most prolific talents for their accomplishments, commitment to excellence and contributions to their profession across the creative disciplines.



ARCHITECTURE  
Patrick Tighe  
Tighe Architecture



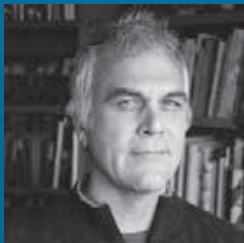
INTERIOR DESIGN  
David Phoenix  
David Phoenix Interior Design



ART  
Vanessa Beecroft



GRAPHIC DESIGN  
Jeri Heiden  
SMOG Design



GRAPHIC DESIGN  
John Heiden  
SMOG Design



LANDSCAPE DESIGN  
James Doyle  
Doyle Herman Design Associates



LANDSCAPE DESIGN  
Kathryn Herman  
Doyle Herman Design Associates



PHOTOGRAPHY  
Grey Crawford



PRODUCT DESIGN  
David Wiseman



STAR ON THE RISE  
Ryan White  
Ryan White Designs



STAR ON THE RISE  
David John Dick  
DISC Interiors



STAR ON THE RISE  
Krista Schrock  
DISC Interiors



STAR ON THE RISE  
Kate Driver  
West Haddon Hall



YOUR DAILY DESIGN DESTINATION  
THROUGH THE LENS OF THE COHEN DESIGN CENTERS

[www.godesigngo.com](http://www.godesigngo.com)  
f t p i



# WESTWEEK 2017

ICONS+INNOVATORS • THURSDAY, MARCH 23

## Showroom Programs

RSVP required for all events: [westweek2017.eventbrite.com](http://westweek2017.eventbrite.com)

11:00 AM - 12:00 PM

### HOLLY HUNT, Suite B377

#### Keynote Reception.

Join *Luxe Interiors + Design* and Holly Hunt for a reception following the morning keynote, including a preview of the new HOLLY HUNT Outdoor Collection and the Classic Collection from Vladimir Kagan.



11:30 AM - 12:30 PM

### Vondom, Suite B114

#### The Innovation of Plastic Told by Modern Icons.

Modern Luxury's Group Publisher Chris Gialanella moderates architect, designer and Vondom Art Director Ramón Esteve and Gensler's Product Design Practice Area Leader Daniel Stromborg on a journey of discovering the many ways various materials used to create furniture can be both timeless and temporary. A meet-and-greet reception with the panel follows featuring insightful interviews with top L.A. design innovators hosted by Josh Cooperman of Convo By Design.

MODERN LUXURY  
**Angeleno**



Chris Gialanella

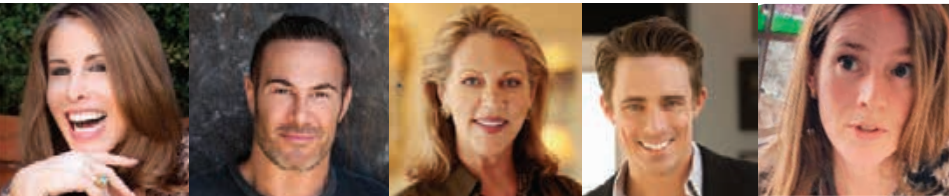
Ramón Esteve

Daniel Stromborg

### Thomas Lavin, Suite B310

#### Iconic. Based On What? According To Who?

Join Madeline Stuart as she queries four design authorities ... Suzanne Tucker, Adam Hunter, Delta Wright and Ryan White ... about what defines a legendary interior, quintessential piece of furniture or archetypal light fixture. And is there an argument to what should ... and what shouldn't ... be labeled iconic within the realm of design? Hear them out and then you be the judge!



Madeline Stuart

Adam Hunter

Suzanne Tucker

Ryan White

Delta Wright

12:30 PM - 1:30 PM

### Summit Furniture, Suite B135

#### Blurring the Lines Between Interiors & Exteriors.

Join Summit Furniture and top tastemakers Jeff Andrews, Chris Barrett, Tim Campbell, Heidi Bonesteel and Michele Trout for an informative discussion on the blurring of lines between interior and exterior spaces. Learn how these distinguished designers have created inspiring solutions for their clients that seamlessly join indoor and outdoor living. A reception with lite bites follows the presentation.



Jeff Andrews

Chris Barrett

Heidi Bonesteel

Tim Campbell

Michele Trout

1:00 PM - 1:45 PM

### Crestron, Suite G288

#### Get Your Shades On! Shading Solutions CEU.

Are you up to date on the latest innovations in window treatments? Attend this CEU course to discover shading solutions for residential design. Explore differences between motorized and manual, the importance of fabric characteristics and its impact on shading fabric performance. Discover how automated shading systems maximize energy efficiency. See demonstrations of different shade installation types. Earn 1 HSW credit. Receive a complementary shade fabric tote. Presented by Crestron's Ami Wright and Patti Wilcox.



Patti Wilcox

Ami Wright

1:00 PM - 2:00 PM

### CinemaTech Home Theater, Suite M26

CinemaTech, the industry leader in theater seating, acoustical treatment, theater design and custom sofas invites you to a presentation by Director of Theater Design Stacey Chu who will discuss current home theater trends and partner opportunities with CinemaTech. The showroom debuts 11 seating offerings, a design center, Planar's 108" LED videowall, 98" Ultra 4K display and Colorbeam's tunable LED architectural and general lighting solution featuring RGB lighting, 1,700 to 6,500 Kelvin whites and flicker free dimming.



Stacey Chu

### Quintus, Suite B519

#### Jewelry For The Home ... AND ... For You!

Join Jobst Blachy and Quintus for a special presentation and trunk show featuring spectacular mirrors from Mark Evans Fine Art and dazzling Estate Jewelry from Elizabeth Gray and her LA-based start-up Sparrow Jewels. Be inspired by their amazing personal and business stories, then view their stunning designs ... and walk home with something beautiful for a client or for yourself. This event is truly outside the box for WESTWEEK and will offer something special for all!



Mark Evans

Elizabeth Gray

1:30 PM - 2:30 PM

### A. Rudin, Suite G172

#### Book Signing & Champagne Reception

#### with Michelle Nussbaumer & Hutton Wilkinson.

Designer, author and world-traveler Michelle Nussbaumer reveals the inspirations and adventures that inform her global aesthetic with the publication of *Wanderlust*, Michelle's new tome with Rizzoli. A. Rudin invites you to celebrate with a meet-and-greet champagne reception and book signing before Michelle's keynote presentation with Hutton Wilkinson and *Architectural Digest* in PDC's Conference Center, Suite B295.



2:00 PM - 3:00 PM

### DEDON, Suite B188

Join us for a design discussion as we welcome one of Europe's most talked-about talents, MBACE award-winning designer Sebastian Herkner, into the DEDON showroom. Following the discussion, we invite you to stay for refreshments and experience a true culture of outdoor living, the serene Mediterranean, while exploring our new 2017 collections: Lorenza Bozzoli's fully upholstered and playful BRIXX; Edward Barber & Jay Osgerby's elemental teak collection TIBBO; and Jean-Marie Massaud's innovative and timeless DEAN.



Sebastian Herkner



### Donghia, Suite G196

#### Ode to Color CEU Presentation.

Join designer Lori Weitzner for a complimentary Ode to Color CEU presentation, a journey in the world of color as it applies to culture, design, mood and memory. Following the program, experience Pollack's latest On the Fringe Collection which will dazzle designers with bright colors and crisp graphics. Weitzner's *Ode to Color* book will be available for purchase and signing at the event's conclusion. Light refreshments served.



Lori Weitzner

4:00 PM - 6:00 PM

### Armani/Casa, Suite G170

#### Keynote Reception

Armani/Casa and *Architectural Digest*'s Mayer Rus invite you to a cocktail reception immediately following Michelle Nussbaumer and Hutton Wilkinson's closing keynote presentation.

## ARCHITECTURAL DIGEST



# WESTWEEK 2017

ICONS+INNOVATORS • THURSDAY, MARCH 23

## Open House Events

9:00 AM - 5:00 PM

### Assouline Books & Gifts, Suite G154

Assouline invites you to visit our stunning new showroom. Admire our one-of-kind floor designed and hand-painted by the local artist Retna. While visiting, drop off your business card to win a \$50.00 candle in our drawing held each day during WESTWEEK. Assouline publishes the most beautiful and finest quality books for your coffee table or library. Every purchase comes with a copy of our catalog, and one of our fabulous tote bags is included with purchases of \$200.00 or more.

### Duralee/HC Monogram, Suite B601

Visit the Duralee showroom to see our latest offerings. From updated traditional to fun outdoor collections, we have something for every project. We carry a full range of furniture and drapery hardware, including motorization. Light refreshments served.

### Ebanista, Suite G190

Ebanista's artisan-made collection is a culmination of all the things founders Fari and Melinda Pakzad have loved since they started as designers over thirty years ago. They've always been drawn to the classics, elegantly edited with a modern allure and an eye for unique details, personality and intriguing finishes. Come see their stunning collection, expertly hand-crafted in the USA.



Ebanista



Osborne & Little

### Osborne & Little, Suite B643

Please join Osborne & Little for an Open House. With Spring's launch of 23 new fabric and wallpaper collections from Osborne & Little, Designers Guild and Christian Lacroix, there are endless new options! Enjoy Prosecco and sweets as you shop.

### Pindler, Suite B530

Please join Pindler for an Open House to experience our endless new fabric options for your Spring projects. Come check out all that Pindler has to offer. Refreshments will be served.

9:00 AM - 6:00 PM

### CinemaTech Home Theater, Suite M26

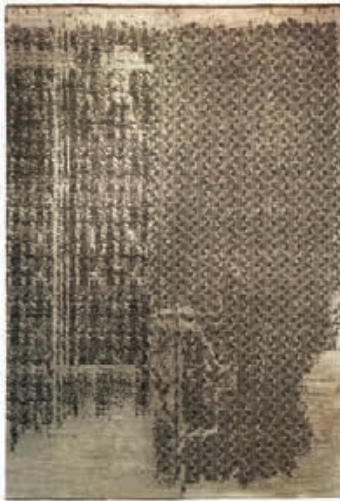
CinemaTech along with showroom partners Planar and Colorbeam NorthAmerica, would like to invite you to see their brand new showroom featuring theater seating, custom sofas, a design center, 108" LED videowall, 98" Ultra 4K display and tunable LED architectural and general lighting solutions. Please stop by to meet the team, put your feet up in one of our comfy sofas and enjoy a refreshment on us.



Cinema Tech

### Lapchi Rug Design Studio, Suite G176

Designed in Italy: Battilossi Rugs for Lapchi. Building on his family's textile knowledge and the recognition of a passion for fine modern rugs hand-woven in Asia, the Battilossi Collection for Lapchi will be featured during WESTWEEK. Maurizio Battilossi has both designed and commissioned rugs for the European market since 1994. His current collaborations include rugs in the Berber weaving tradition, the Draga Obradovic textiles and colorful Eclectica rugs.



Lapchi Rugs

### Maharam, Suite G152

Join Maharam for a special preview of its latest product initiative: leather. With eight styles sourced exclusively in Italy ... with the exception of a true suede from Spain ... Maharam leather features a variety of grains and textures but forgoes excessive finishing. Instead, guided by Maharam's material expertise, the collection is minimally treated and celebrates the beauty of leather returned to a more natural state. Color palettes of great depth and specificity complement this approach. Developed exclusively by the Maharam Design Studio, whose color direction prioritizes an independent response to the material qualities of the product at hand, Maharam leather is available in one hundred unique shades.



Maharam



International Down & Linen

10:00 AM - 4:00 PM

### International Down & Linen, Suite B368

Leave it to SFERRA to make comfort as beautiful as possible. Stop in to sample the exquisite detailing of the new Spring collection and take time to touch the newest in soft.

### Quadrielle Fabrics & Wallpapers, Suite B629

Please join us in our stunning, brand-new showroom as we feature our latest hand-printed fabrics and wallpapers. Light refreshments will be served.

10:00 AM - 5:00 PM

### Jean de Merry, Suite B653

Discover Jean de Merry's boutique textile collection. Hors d'oeuvres and light refreshments served all day.



Holly Hunt

11:00 AM - 3:00 PM

### HOLLY HUNT, Suite B377

HOLLY HUNT Los Angeles celebrates the arrival of the new Moray Outdoor Furniture Collection from HOLLY HUNT. Stop by our 3rd Floor showroom and experience the new collection with outdoor-inspired beverages and light bites.

11:00 AM - 4:00 PM

### Francesco Molon Italian Luxury Furniture, Suite B540

Francesco Molon invites you to visit the showroom during WESTWEEK Spring Market to see our Italian, tailor-made furniture. We offer both the timeless classics and contemporary deco collections in our showroom. Refreshments like nespresso and chilled Prosecco with Italian treats will be offered. Saluti!



Francesco Molon

1:00 PM - 3:00 PM

### HOLLY HUNT/Phillip Jeffries, Suite B619

Dune grass whips in the wind as scattered shells line the New French Riviera awaiting your arrival. Taking inspiration from your beach oasis, a place where you go to escape ... elements of coastal textures, airy fabrics and chic naturals inspire. From Cape Cod to Cannes ... Spring 2017 is COASTLINES.



Phillip Jeffries

3:00 PM - 5:00 PM

### Holland & Sherry, Suite B305

Visit Holland & Sherry to preview the West Coast launch of our newest collection. Modern Legacy is our tribute to the classics, reimagined for fabric, rugs, wall covering and embroidery.





Image: Courtesy Equator Production. Photo: Francesco Lagnese

**The Interior and The Carpet**  
Equator Production, New York  
Petra Grunert Singh, Publisher

**Reception: Wednesday, March 22**  
**5:00-9:30 PM**  
**VAROLA, Suite B256**

designLAB is pleased to present *The Interior and The Carpet* at VAROLA (Suite B256), an exhibition of carpets produced by publisher, Petra Grunert Singh, Equator Production, that includes carpets by 14 internationally renowned artists: Alan Belcher, Walter Dahn, Jiří Georg Dokoupil, Liam Gillick, Emilia and Ilya Kabakov, Joseph Kosuth, Ken Lum, Jonathan Monk, Joel Otterson, Peter Nagy, Julião Sarmento, Rob Scholte and Rosemarie Trockel. On view from March 22 - June 23, the exhibit opens with a public reception from 5:00 - 9:30 PM on Wednesday, March 22.

A new series of carpets curated by Cornelia Lauf for Equator Production, in a project managed by GoldenRuler, Rome ([www.goldenruler.eu](http://www.goldenruler.eu)) is included, in addition to

Equator's roster of artists. Also, a selection of carpets was shown recently at the Museum of Contemporary Art Cleveland in the exhibition, *Wall to Wall: Carpets by Artists*, curated by Cornelia Lauf.

Equator Production ([www.equatorproduction.com](http://www.equatorproduction.com)) collaborates with artists who incorporate their practice into the larger narrative of artistic historical relevance, blurring the domains of art, design, and craftsmanship. By commissioning carpet designs from contemporary international artists and orchestrating the execution and production of designs in limited editions by traditional weavers, Equator Production seeks to fuse both artistic processes, creating a long lost symbiosis between conception and production, while restoring the connection between the artist and the interior and the vital connection between conception and production.

Equator Production's German born publisher Petra Grunert Singh studied at the Academy of Fine Arts in Dusseldorf. Since 2014 she has been involved in renewing Equator

Production's original editions, while also commissioning a new generation of artists to make designs for carpets.

For further information please visit [helenvarola.com](http://helenvarola.com), email [designLABcurator@helenvarola.com](mailto:designLABcurator@helenvarola.com) or call Valerie Maxwell, Director, VAROLA, at (949) 547-9640.

VAROLA aims to present new ambitious projects with artists, operating as a project space and production site for recent contemporary art with a focus on design as an extension of artistic practice.

**red|seven**  
BY WOLFGANG PUCK  
During the reception, enjoy happy hour (cash bar) at Red Seven, located on the first floor of the Green Building. Valet, garage, and street parking are available and complimentary parking for press is available by calling the PDC Parking Office one day in advance, Monday - Friday at 310-360-6417. For updated information please visit [designLAB at www.pacificdesigncenter.com](http://designLABatwww.pacificdesigncenter.com).



Petra Grunert Singh  
Photo: Michel Nafziger

designLAB Galleries

**Banana Cream Pie**  
Suite B208

**Boîte Noire Gallery**  
Suite B222  
[boitenoiregallery.com](http://boitenoiregallery.com)

**CMay Gallery**  
Suite B226  
[cmaygallery.com](http://cmaygallery.com)

**Espace Franck Bailleul**  
Suite B228  
[franckbailleul.com](http://franckbailleul.com)

**Industry Gallery**  
Suite B270  
[industrygallery.net](http://industrygallery.net)

**Meta-4 Art**  
Suite B266  
[facebook.com/cmaygalleryseoul/](http://facebook.com/cmaygalleryseoul/)

**MICUCCI ARTE**  
Suite B209  
[micuccicollection.com](http://micuccicollection.com)

**George Stern Fine Arts**  
Suite B274  
[sternfinearts.com](http://sternfinearts.com)

**Sur le Mur**  
Suite B267  
[surlemur.com](http://surlemur.com)

**Thomas Paul Fine Art**  
Suite B275  
[tpaulfineart.com](http://tpaulfineart.com)

**VAROLA**  
Suite B256  
[helenvarola.com](http://helenvarola.com)

**Young Projects**  
Suite B230  
[youngprojectsgallery.com](http://youngprojectsgallery.com)

About designLAB

designLAB provides a platform to explore art that addresses the design center's unique context of interior design, spanning a variety of art disciplines and media. designLAB is conceived and directed by New York-based curator Helen Varola and made possible by the support of Charles S. Cohen, owner and president of Pacific Design Center, collector and museum trustee at MOCA Pacific Design Center.

designLAB is located on the second floor of PDC's Blue Building and most galleries are open Monday - Friday from 11:00 AM - 5:00 PM or by appointment on Saturday. Enter the Blue Building on Melrose Avenue and use the escalators or elevators to visit the second floor.

Valet, garage, and street parking are available and complimentary parking for press is available by calling one day in advance, Monday - Friday, at 310-360-6417.

**MOCA Pacific Design Center**  
Please also visit MOCA Pacific Design Center, open 11:00 AM - 5:00 PM, Tuesday - Friday; 11:00 AM - 6:00 PM on Saturday and Sunday; and closed on Monday. Admission to MOCA Pacific Design Center is always free.

**Exhibition Proposal**  
designLAB inquires or to submit an exhibition proposal: Please write a brief email with a description of your project to [helen@helenvarola.com](mailto:helen@helenvarola.com).

**Art Collection and Gallery Tours**  
Contact: Valerie Maxwell, designLAB Manager, [vmaxwell@mac.com](mailto:vmaxwell@mac.com) or (949) 547-9640

**Private Events**  
To arrange your private event or screening at any one of the beautifully located event spaces such as Spectra, Red Seven, Silver Screen Theater, Center Blue Atrium, Blue Lobby, Plaza and Conference Center visit <http://www.pacificdesigncenter.com/amenities/>.



# Market Sponsors

## PDC Sponsors

Mention PDC and enjoy discounted rates from these sponsors.



### PDC SPONSOR RESTAURANTS



8715 Melrose Avenue, Los Angeles, CA 90069  
Phone: 323-347-6060 catchrestaurants.com



8384 W. Third Street, Los Angeles, CA 90048  
323-655-8384 the-churchill.com



8722 West Third Street, Los Angeles, CA 90048  
Phone: 310-278-2345 thedistrictbyha.com

### PDC SPONSOR HOTELS



155 N. Crescent Drive, Beverly Hills, CA 90210  
Reservations: beverlyhills@stayaka.com  
Phone: 310-385-1924 stayaka.com



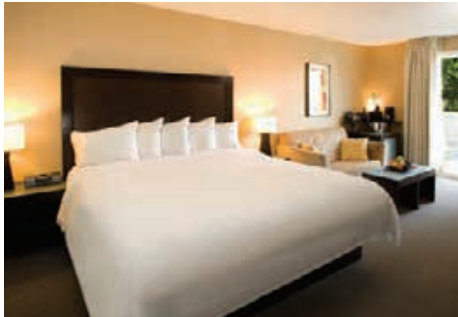
1000 Westmount Drive, West Hollywood, CA 90069  
Phone: 877-686-2082 Fax: 310-854-6744  
chamberlainwesthollywood.com



8435 Beverly Blvd., Los Angeles, CA 90048  
323-658-6663 elanhotel.com



733 N. West Knoll Dr., West Hollywood, CA 90069  
800-578-4837 leparcsuites.com



8384 W. Third St., Los Angeles, CA 90048  
800-62-HOTEL theorlando.com



8555 Beverly Blvd., Los Angeles, CA 90048  
310-278-5444 sofitel-los-angeles.com

## DESIGNER CAMP

A curated summer day camp for  
teens passionate about design.

Designer Camp allows teens (ages 11 - 17) to be immersed in the design industry. This boutique style camp invites students in to the exciting worlds of **Interior Design, Fashion Design, Photography, Visual Arts, Styling, Trend Forecasting, Entertainment Set Design, Merchandising, and much more!**

at VAROLA (B256)

For camp dates, lineup, pricing and registration visit:  
**www.designercamp.com**





# Showroom News



NEW SHOWROOM

## Intellectual Innovation

**Assouline Books & Gifts**  
Suite G154  
424-249-3879  
[assouline.com](http://assouline.com)

Assouline is the first luxury brand on culture offering everything expected in a chic and personalized library, from beautiful books and special editions on art, travel and fashion, to luxury gift items and unique library accessories. For us, books are a matter of intellect and emotion, of heritage and innovation. Because information is not only about today, and the past is a sensational source of inspiration. Assouline invites you to visit our stunning new showroom featuring our one-of-kind floor designed and hand-painted by the local artist Retna.



NEW SHOWROOM

## Natural Partnerships

**HOLLY HUNT | Phillip Jeffries**  
Suite B619  
310-659-3776  
[hollyhunt.com](http://hollyhunt.com)

HOLLY HUNT|Phillip Jeffries is a new, dramatic space flooded with light, providing the perfect showcase for both brands. From Phillip Jeffries' expansive selection of natural, textured and specialty wallcovering wing boards and displays, to the luxurious multi-line offerings of HOLLY HUNT, including Great Plains Textiles, HOLLY HUNT Leather and Great Outdoors Textiles, these showrooms unite to provide a one-stop-shop for all covering needs.



NEW SHOWROOM

## Explore Elegance

**Jean de Merry**  
Suite B653  
323-655-9193  
[jeandemerry.com](http://jeandemerry.com)

Boasting an expansive yet highly refined environment featuring soaring, 40-foot high ceilings punctuated with vaulted skylights, the Jean de Merry showroom is envisioned as a sophisticated, gallery-like setting to merchandise more than a dozen lines, including Jean de Merry, Douglas Fanning, Bassam Fellows, Marmol Radziner, Tom Faulkner Jean-Louis Deniot, Azadeh Shladovsky, Natasha Baradaran and Alexander Lamont.



NEW SHOWROOM

## West Coast Glamour

**Vondom**  
Suite B114  
424-777-0650  
[vondom.com](http://vondom.com)

Recently expanded to the West Coast, Vondom is pleased to announce its new showroom at Pacific Design Center. Vondom is furniture made with passion, designed by and for dynamic people, innovators, curious types ... who, like you, enjoy fashion and trends, and demand the best quality in everything around them. Vondom pieces transform the simplest space into an ambiance filled with glamour, both unique and extraordinary.



# Showroom News

## Coming Soon



### Flourishing Patterns

**Quadrille Fabrics and Wallpaper**  
Suite B629  
310-657-2995  
[quadrillefabrics.com](http://quadrillefabrics.com)

Quadrille celebrates the grand opening of a new expanded showroom during WESTWEEK Spring Market. The newly relocated space debuts on PDC's 6th Floor offering the perfect showcase to present the brand's renowned hand-printed fabrics and wallpapers, as well as the collections of China Seas, Alan Campbell, Home Couture and Cloth & Paper.

### Hot Seats

**CinemaTech Home Theater**  
Suite M26  
800-688-6680  
[mycinematech.com](http://mycinematech.com)

At CinemaTech we create beauty, we create usability, we create inspiration. With our expertise, CinemaTech is able to push the boundaries of what a private home theater is and what it can be. Our home theaters not only look beautiful, they sound and feel beautiful. We don't believe in beauty without performance, or performance without beauty. Instead, we choose to engineer home theaters that combine the many facets of performance to create something exceptional. To us, home theaters are not just another room in your home. They are machines, they are vacations, they have the power to transport you wherever you want.

### Historic, Iconic and Modern

**George Smith**  
Suite B307  
310-360-0880  
[georgesmith.com](http://georgesmith.com)

George Smith has become synonymous with beautifully crafted furniture. Every sofa, chair, chaise and stool is lovingly made in our workshops in the North of England. George Smith, the early nineteenth century furniture maker, is still a strong influence in the way we make and design our furniture. Equally, we are driven to make contemporary pieces relevant for our lives today. Our skills as craftsmen and designers also ensure that your furniture is completely aligned to the way you live and the homes you create. Sizes and details can be adjusted to produce a George Smith piece of furniture just for you.

### Cashmere Quality

**Loro Piana Interiors**  
Suite B655  
[loropiana.com](http://loropiana.com)

Loro Piana Interiors is a collection of home textiles created for those who appreciate the outstanding quality that the company is renowned for. The fabrics of the Interiors collection are made from fine fibers and superior quality materials purchased in their countries of origin and crafted in Italy, with rigorous quality controls at each stage of production. The Loro Piana Interiors Collection offers over 600 types of fabrics designed for upholstery, curtains and decor accents. This unique, original collection of exclusive materials boasts a wide range of weaves, patterns and colors to mix and match, ready to be interpreted with personal style.

## COHEN MEDIA GROUP

Cohen Media Group and  
Amazon Studios present  
**THE SALESMAN**  
A new masterpiece by  
Academy Award® winner  
Asghar Farhadi

Cohen Film Collection Presents  
The Merchant Ivory Production of  
E.M. Forster's  
**HOWARDS END**  
25th Anniversary - 4K Restoration  
Winner of 3 Academy Awards®  
Now Available on Home Video

[CohenMedia.net](http://CohenMedia.net)





# Product News

**JANUS et Cie,  
Suite B146/B193**

JANUS et Cie introduces Katachi, named for the Japanese concept that combines kata, meaning form, and chi, meaning magic. "Katachi is for lovers of craftsmanship. The meticulous construction yields graceful designs that are magical, ergonomic masterpieces," says Janice Feldman, JANUS et Cie founder and collection designer. Katachi features four new, variegated JANUSfiber hues for an enchanting effect outdoors.



**Jean de Merry,  
Suite B653**

The Roche wall sconce by Jean de Merry combines bronze, rock crystal, and gold leaf for a sinuous design.



**HOLLY HUNT,  
Suite B377**

HOLLY HUNT Los Angeles is proud to present Vladimir Kagan's Classic Collection. Vladimir Kagan was a long-time friend and inspiration to Holly. The new installation of Kagan's most iconic designs includes the Freeform Curved Sofa, Sculpted Coffee Table, Barrel Chair and Contour Low Back Lounge Chair with Foot Stool.



**Cowtan & Tout, Suite B647**

Larsen is pleased to introduce the 2017 collection, inspired by our continuing fascination with the natural world. The fabrics in this collection take reference from graphic, ethnic motifs as well as details of plants and minerals, ranging from the meticulous organic lines of tree bark to the abstract glossy finish of rocks and earthen strata. The collection offers fabrics with beautiful, bold textured effects, matte and shine contrasts, woven and embroidered details, and luxurious sheers. View the full collection at Cowtan & Tout.



**A. Rudin, Suite G172**

Introducing Matsuoka. A. Rudin is pleased to welcome Matsuoka Furniture to its Los Angeles showroom. In 1866, on the Japanese island of Honshu, the Matsuoka family began producing exceptional furniture. And for the succeeding 150 years, Matsuoka's reputation for excellence has continued to showcase their craft superbly with fine quality while retaining many of the ancient artisanal skills.



**Donghia, Suite G196**

Donghia captures the essence of New York City in its 2017 collection, Manhattan Muse. Visionary designs expressed through embroidered, woven, printed and hand-painted goods evoke the world's great city of dreams. The nearly 200 offerings convey the energy, art, drama, music and unique lifestyles of this iconic locale; birthplace of the Donghia brand. Taken all together, the collection's myriad offerings and diverse range of qualities enable the designer to create the sophisticated, dazzling yet livable penthouse look... in any space.



**Edelman Leather,  
Suite G158**

From the grassy hillsides in Western Europe, an idyllic life lived. Ranger reminds us of when we first fell for leather. A material that is both rugged and refined; one that not only stands the test of time but responds to it. Ranger is full-grain, leather-finished with only aniline dyes and wax. Tumbling the hides burnishes the natural grain structure which provides great depth to the twelve standard colors, highlighting the true nature of the leather.



**Quintus,  
Suite B519**

Quintus is pleased to present the Bracelet Chandelier by Studio Bel Vetro. Hand-blown in Healdsburg, California, this stunning new design can be customized to complement your exact requirements. Artisan-owned and artisan-made, right here in California!



**Ebanista, Suite G190**

Featuring equal parts of elegance and glamour, Ebanista's new Marchese Sofa includes a tufted curved back, reeded base and decorative legs. Shown in antiqued gold finish and with Ebanista's Chantal Sepia ribbed silk upholstery. As seen in *Architectural Digest* and *Veranda* magazines.





# Product News

## Innovations, Suite M20

The Spring 2017 collection from Innovations brings a hyper-focus on art to the wall. The Design Studio poured their passion into the ten wallcoverings, like Watercolor, whose vivid brushstrokes explore the vertical movement of water and paint. A tremendous amount of color, digitally rendered, goes into each of the eight colorways. Experience the complete art-inspired collection, available now, in the Innovations showroom.



## Fabricut, Suite B470

Stroheim and Dana Gibson collaborate this season with Crypton Home for a luxury performance upholstery collection. Featuring 26 playful patterns and textures in Dana's signature color combinations, these fabrics are engineered with Crypton technology creating heavy-duty durable, stain resistant fabrics that are also luxuriously soft, rich and beautiful; family-friendly and perfectly suited for everyday living. See and feel for yourself why Dana Gibson Crypton Home is the ultimate performance fabric collection for your luxurious interiors!



## Samuel & Sons, Suite B609

Lori Weitzner is pleased to introduce the Regatta Collection for Samuel & Sons, Lori's first indoor/outdoor collection of performance trims. Named after the carefree pastime of boat racing, the Regatta Collection celebrates being outdoors and the subtle beauty found in nature. Made using heathered yarns and ombré techniques, the cords and tapes each contain numerous hues that reflect the ever-shifting colors seen in all facets of the natural world.



## Lapchi Rug Design Studio, Suite G176

Battilossi for Lapchi; hand-woven rugs designed in Italy. Maurizio Battilossi has both designed and commissioned rugs for the European market since 1994. His newest collaborations with Lapchi include Linea rugs, woven in the Berber tradition with distinctly Battilossi finishes, the Draga Obradovic Pattern Mix textiles and a range of colorful Eclectica rugs which can be customized.



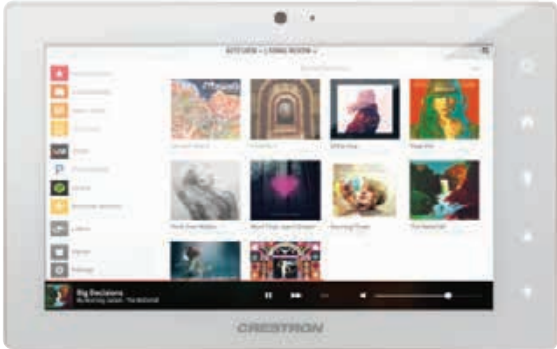
## International Down & Linen, Suite B368

Introducing Alicia Adams Alpaca. There's no easier way to refresh a room than to add a splash of vibrant color in the form of a lush throw. Alicia Adams offers these stunning Alpaca fringed throws in over 80 variations. Why not consider this naturally soft, yet durable alternative to cashmere? Quick ship program available.



## Crestron, Suite G288

Introducing Crestron's most advanced TSW touch screens! The brand new Crestron TSW-X60 range of touch screens are the most beautiful ever and offer the most incredible user experience. The award-winning touch screens are lightning fast, include speakers, a microphone and a camera for video intercom or to see any room in the house, and include Sonos as standard. The TSW-X60 series ... even better performance with even better design.



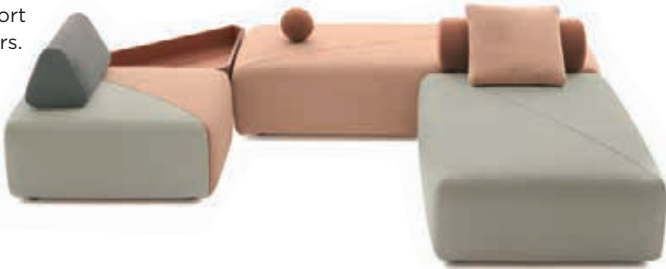
## Kravet, Suite B624

Presenting a modern perspective for Kravet Couture's array of textured fabrics, the new Luxury Textures Collection offers stunning options from subtle to sculptural designs. Lofty chenilles, luxurious velvets and innovative wovens are showcased in two striking books: Steel and Stone. Throughout the collection, small-scale patterns, refined geometrics along with exclusively designed jacquard velvets layer beautifully with the more subtle fabrics for a sumptuously textured and sophisticated look.



## DEDON, Suite B188

DEDON's first fully upholstered collection, BRIXX by Lorenza Bozzoli, offers amazing versatility and 360° functionality. Simple yet sophisticated, natural yet refined, this flexible system of rectangular modules fully lives up to the playfulness of its name, allowing you to construct islands of luxurious comfort both indoors and outdoors. Accessible from all sides, the collection brings people together for a new way of relaxation and social interaction.



## Robert Allen, Suite B499

Rich. Earthen. Sumptuous. The new Color Library Collection from Robert Allen brings home the colors, moods and textures of nomadic cultures. From the Atlas Mountains of Morocco to the Tibetan plateau and the prairies of the Great Plains, the spirit of the nomad is embodied in a pure palette of rich pigments. Rooted in onyx, carob, denim and cement, it's a color story that draws from artisanal wares and traditional dress found amid these sparse locales.





# Product News

### Raoul Textiles, Suite G160

Raoul Textiles' new Blooms & Berries Collection is a lived-in, literary mix of patterns, inspired by the artistic disorder of a Bloomsbury drawing room. The collection blends eclectic florals and small-scale motifs, in a range of rich, chalky colors. The prints complement the newest furniture from Engle & Deutch.



### Holland & Sherry, Suite B305

In 2016, Holland & Sherry celebrated 180 years in textiles: a long history defined by our commitment to quality and classic design. Through our interiors division, our collection has evolved to include 21st century adaptations of the warp and weft, as well as expanding into materials for every surface. The patterns, processes and unique history of these collections stay true to their origin while reaching toward a fresh new aesthetic. Modern Legacy is our tribute to the classics, reimagined for fabric, rugs, wall covering, and embroidery.



### HOLLY HUNT/ Phillip Jeffries, Suite B619

This season brings a breath of fresh air with a focus on materiality and innovative new textures from Great Outdoors Textiles for HOLLY HUNT. Deep icy blues, plums and luminous yellows float among a new range of crisp, clean whites in The Fresh Air Collection. Visit our new 6th Floor showroom to see all that is new from HOLLY HUNT Textiles.



### Thomas Lavin, Suite B309/B310

The Thomas Lavin Showroom is pleased to add Trosca to its select roster of high-end home furnishings purveyors. Hand-crafted in Chicago by husband-and-wife duo Deirdre Jordan, interior architect, and trained furniture designer Bob Robinson, Trosca aims to create authentically original furnishings. Committed to unadorned simplicity, Trosca's collection of seating, tables and casegoods are produced with an eye for minimizing adverse effects on the environment.

### Vondom, Suite B114

After the success of the Africa Chair, Vondom and Eugeni Quitllet round out the Africa Collection by taking it to new heights ... a bar and counter stool. Quitllet is the recently awarded Designer of the Year 2016 by Maison & Objet. Stackable and available in 7 colors, the Africa Stool is simply versatile. Indoor/outdoor use; in stock.



### Osborne & Little, Suite B643

Inspired by the intense pigments and shades found in Majolica ware, Designers Guild's new Majolica Collection combines extraordinary contemporary florals, in various scales, with classic damasks and marbled textures.



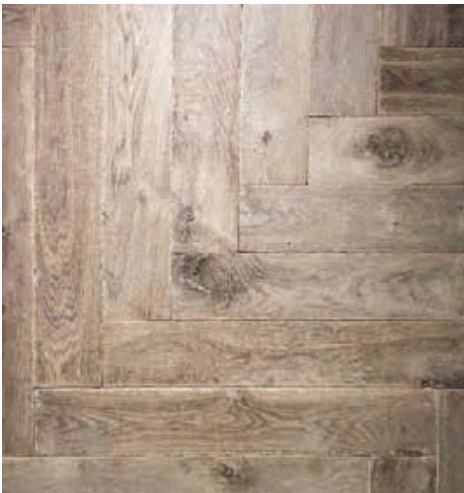
### Pindler, Suite B530

Pindler is proud to introduce the new Exclusive Seaside Collection. The Seaside Collection is an indoor/outdoor grouping of simple yet sophisticated coastal inspired solids, stripes and patterns. All patterns are woven in Sunbrella 100% solution-dyed, all-weather acrylic and designed by world-renowned designer Richard Frinier. The Seaside Collection is named for the many iconic and romantic coastal destinations and locales around the world that served as inspiration for these distinctively beautiful and exceptionally executed performance textiles.



### PERFEC Hardwood Floors, Suite G299

Step into the PERFEC showroom and find more than 100 hardwood floors on display from around the world. Exclusive finishes from Italy, Holland, Belgium, UK and local Los Angeles artisans on a variety of plank platforms and grades. Besides floorings, there are a few unique collections of outdoor wood and wall wood. PERFEC also specializes in custom staircases, whether standard wall-to-wall, boxed, pie or floated treads to fit any project.



### Summit Furniture, Suite B135

For 38 years, Summit Furniture has outfitted the likes of private estates, elegant far-flung villas and yachts, with timeless hand-crafted teak chairs, chaises, sofas and dining tables. Now, the Monterey, California-based company is adding another layer to the collection: fabric. The launch of Summit Endurance Fabrics includes fade-proof, graphic-printed pattern Mazie, recalling the subtle, puzzle-like paths of a maze with a wink to Midcentury design. It's made of 100-percent solution-dyed acrylic and intended for indoor or outdoor use. Available in 14 designs and up to five colorways.





# Product News

**Bausman & Company,  
Suite B396**

Bausman & Company introduces the new Signature Collection 5533 Sedna Console Table. The Signature Collection comprises unique designs with a contemporary aesthetic combining multiple materials that are destined to inspire. All pieces are crafted locally and available in a variety of finishes and custom sizes. Three unique Console Tables start the collection off with more new designs to be presented regularly in the expanded Bausman & Company showroom.



**Scott Group Studio,  
Suite B613**

Introducing Istorii: A Larry Hokanson Collection. This collection celebrates industry pioneer in rug design Larry Hokanson. His lifetime exploration and understanding the importance of art and global culture combined with his intense passion for Russian history are captured in Istorii. Istorii, meaning stories in Russian, reveals Larry's life journey articulated through eight expressive patterns and vibrant hues.



**Duralee/HC Monogram,  
Suite B601**

We're passing the traditional torch to this season's new Whitmore Collection. This three-color book set of wovens with a coordinating book of prints has been designed to offer modern variations on traditional design classics. Neutrals in warmer tones, rich reds and timeless blues are offered up in this first volume of elegant, tasteful textiles for the home.



**CinemaTech Home  
Theater, Suite M26**

CinemaTech launches a new showroom at PDC showcasing their newest models, including motorized sofa sectionals with motorized headrests and dedicated theater seating in nine different styles. All of CinemaTech's seating are made-to-order, custom pieces that are hand-crafted in Germany or the US, with hundreds of leathers and fabrics to choose from as well as the ability to use a COM/COL.



**Baker Furniture, Suite B525**

Barbara Barry's new line for McGuire furniture is inspired by her recent purchase and remodeling of her new home in Ojai, California. Contemporary form meets natural luxury with the Thatcher Sectional, designed to be configured in myriad ways. Each clean-lined body can be built with an open or closed arm design allowing for configuration as a sofa or sectional. A new, modern profile for McGuire, this sofa is grounded yet sublime. The hardwood maple frame accentuated by a square caning interior and exterior, for structural and material interest.



**Schumacher/Patterson Flynn Martin,  
Suite B489**

Bonnee Sharp of Studio Bon has been making beautiful hand-printed textiles since the 1990s. With this collection we have taken the same happy prints you know and love, and made them suitable for outdoor use. The result? A collection chock full of graphic designs in a variety of scales and coordinated colorways that are meant to be mixed and matched. Stop by our showroom to see them today!



**Reagan Hayes,  
Suite B300**

Reagan Hayes is pleased to introduce the Vincent Accent Table. Five sides, five angles, five finishes. Vincent is a contradiction of excessive precision and haphazard proportions; a freshly cut gem from an indecisive jeweler. Vincent shines in any combination of finishes from the subtle to the sensational.



**Kneedler|Fauchère, Suite B600**

Kneedler|Fauchère proudly welcomes Zak + Fox to our showroom family this WESTWEEK. Zak Profera's latest collection, Timbuktu, includes ten new patterns inspired by his most recent desert travel expedition. Shown is Expedition, which ventures into new territory, pairing close-set stripes with broad spacing at unexpected intervals. In woven linen, this pattern is a modern take on the well-traveled history of gingham, pulling inspiration from pattern closely associated with colonial India, Malaysia, Japan, Britain and beyond. As founder of this much buzzed about line, Zak's collections are charged with an ancient and layered narrative that spark an aesthetic that is classic, contemporary and ever-shifting.



**Michael Taylor Collections,  
Suite B504**

Expect the unexpected. Michael Taylor Collections is pleased to announce the launch of its new line, Taylor. Premiering this Spring, the collection offers 18 new contemporary furnishing designs with a refined, modern edge. Clean lines, sophisticated material pairings and the uncompromising bench-made quality of Michael Taylor Designs come together in a fresh, accessible collection designed for today's lifestyle.





# Content

WESTWEEK 2017  
**ICONS**  
+ INNOVATORS

WEDNESDAY, MARCH 22 + THURSDAY, MARCH 23

**#westweek2017 #icons #innovators**

PDC ONLINE UPDATE

Stay up to date with PDC events, lectures, product news and more...  
Sign up for newsletters and eblasts at [pacificdesigncenter.com/mailling-list/](http://pacificdesigncenter.com/mailling-list/)

 [facebook.com/PacificDesignCenter](https://facebook.com/PacificDesignCenter)

 [instagram@pacificdesigncenter](https://instagram@pacificdesigncenter)

 [twitter.com/PDCdesigncenter](https://twitter.com/PDCdesigncenter)

 [pinterest.com/PDCdesigncenter](https://pinterest.com/PDCdesigncenter)



visit our blog: [godesigngo.com](http://godesigngo.com)



HOLLY HUNT  
SUITE B377/B619