



OPENING CEREMONY
Est. 2002

[HOME](#) › [BLOG](#) › Standard Deviation at the PDC

[HELP](#) [LOG-IN](#) [TOTE](#)
(0)

SEARCH:

[GO](#)

GET OUR NEWSLETTER:
ENTER E-MAIL

[GO](#)

[SHOP](#) [BLOG](#) [ABOUT](#)

OPENING CEREMONY NEW NEWS

[CONTENTS](#) [ARCHIVE](#)

CATEGORIES



RECENT POSTS

[CHLOÉ SEVIGNY FOR ...](#)
[RODARTE SAMPLE SALE](#)
[CHLOÉ SEVIGNY FOR ...](#)
[PAS DE DEUX: BLACK SWAN ...](#)
[OC ACE HOLIDAY GIFT ...](#)
[MEET SHANNON](#)
[PICTURES BY WOMEN: A](#)

[INTRODUCING THE OC ...](#)
[STANDARD DEVIATION AT ...](#)
[MEET EMIKO](#)

RECENT POSTS

FRIENDS 'N' FAMILY

KEEP IN TOUCH

OCNN STAFF

[< INTRODUCING THE OC WORKSHOP!](#)

[MEET EMIKO >](#)

Tue, December 7, 2010

[SCENE AND HEARD](#)

Standard Deviation at the PDC

by [MORGAN REHBOCK](#)

Visiting the Pacific Design Center in West Hollywood, CA can sometimes feel like a strange cross between stepping in to a sci-fi office utopia and shopping for furniture in a high-tech 90's mall. The PDC was originally created as the West Coast's premier center for interior design and housing showrooms dealing with all aspects of home design from faucets to furnishings, and it was here that a program called [DESIGN LOVES ART](#) (created in 2009) opened up vacant spaces in the center to LA's many wonderful art galleries and dealers.

Design Loves Art brings together elements of the Los Angeles art world with the city's design community to create a vibrant scene at the PDC that some might even claim to rival LA's well-known art communities in Culver City and Chinatown. November 18th marked the opening of many new spaces at the PDC, including a new space run by LA institution, [GEMINI G.E.L.](#), and [ANNIE WHARTON LOS ANGELES](#), a new space run by Annie Wharton, who just moved her operation from Chinatown to the PDC.

Also opening on the 18th was a truly awesome new show, entitled Standard Deviation, at Janet Levy's [SEE LINE GALLERY](#) co-curated by OCLA's own [JENNY LE](#)! Selecting works from a diverse group of artists and friends, Jenny and Janet's "Standard Deviation" reinterprets the mathematical concept and applies it to the world of art.

The show runs through January 7, 2011.

SEE LINE GALLERY

Pacific Design Center
9897 Melrose Avenue, Suite B274



Jenny and I visiting Annie Wharton Gallery across the way



Me next to Karen Lofgren's "Dawn"

6007 Melrose Avenue, Suite B274
West Hollywood, CA 90069
[MAP](#)



Andre Vippolis next to his piece, "Purple Water Hole"

FILED UNDER: [ART](#) , [EXHIBITION](#) , [JENNY LE](#) , [PACIFIC DESIGN CENTER](#) , [LOS ANGELES](#) , [OCLA](#) , [ANDRE VIPPOLIS](#) , [SEAN DALY](#) , [JASON YATES](#) , [BROOKS SALZWEDEL](#) , [LINLEE ALLEN](#) , [REGGIE CASAGRANDE](#) , [ALEX ARTIGAS](#) , [DESIGN LOVES ART](#) , [GEMINI G.E.L.](#) , [ANNIE WHARTON LOS ANGELES](#) , [SEE LINE GALLERY](#)

[SHARE THIS](#) [E-MAIL](#) [LINK](#) [1 COMMENT](#)

[Like](#)



Sean Daly and his piece, "Money Grows Near Trees, Sickle Bill Does His Dance"



Jason Yates' "School Clown"



Brooks Salzwedel's "Tendrils"



Linlee Allen and Jenny



My groovy friends, Krissie Torgerson and Drew Hinckley



Linlee and Jenny having tiger time



Jenny, Leslie Sun, and Laurence Goldberg



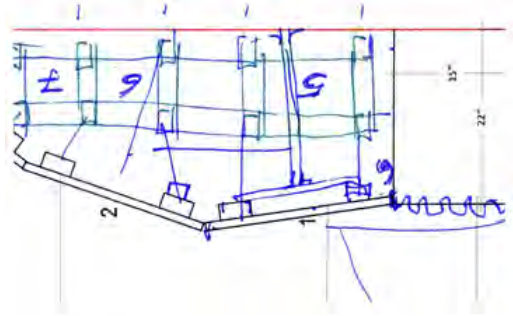
Janet Levy, Linlee Allen, and Jenny



Melissa Keller and Tere Artigas



Artists Reggie Casagrande, Alex Artigas, and Andre Vippolis



November 18, 2010 - January 7, 2011
Opening Reception: Thursday, November 18, 5-8pm

Standard Deviation

Curated by Jenny Le and Janet Levy

Alex Artigas Reggie Casagrande Taska Cleveland
Sam Combellick Zoe Crosher Sean Daly
Jen DeNike Christopher Hauri Patrick Holeck
Seth Kaufman Karen Lofgren Sean Brian McDonald
Lesley Moon Rachael Neubauer Brooks Satzwedel
Natascha Snellman Andre Vippolis Jason Yates


see
line

seelinegallery.com

Pacific Design Center
8687 Melrose Avenue, Suite B274
West Hollywood, CA 90069

info@seelinegallery.com

Hours Monday to Friday 11am - 5pm
and by appointment

 Click to change to another code

1 comment

1. Cute hair morgan!
TUE, DECEMBER 7, 2010
17:20

- *Liska Cole*